

Alliance

For Education

Leslie Rodden, M.A.

**Director of Higher Education and Workforce
Development**

**San Bernardino County
Superintendent of Schools**

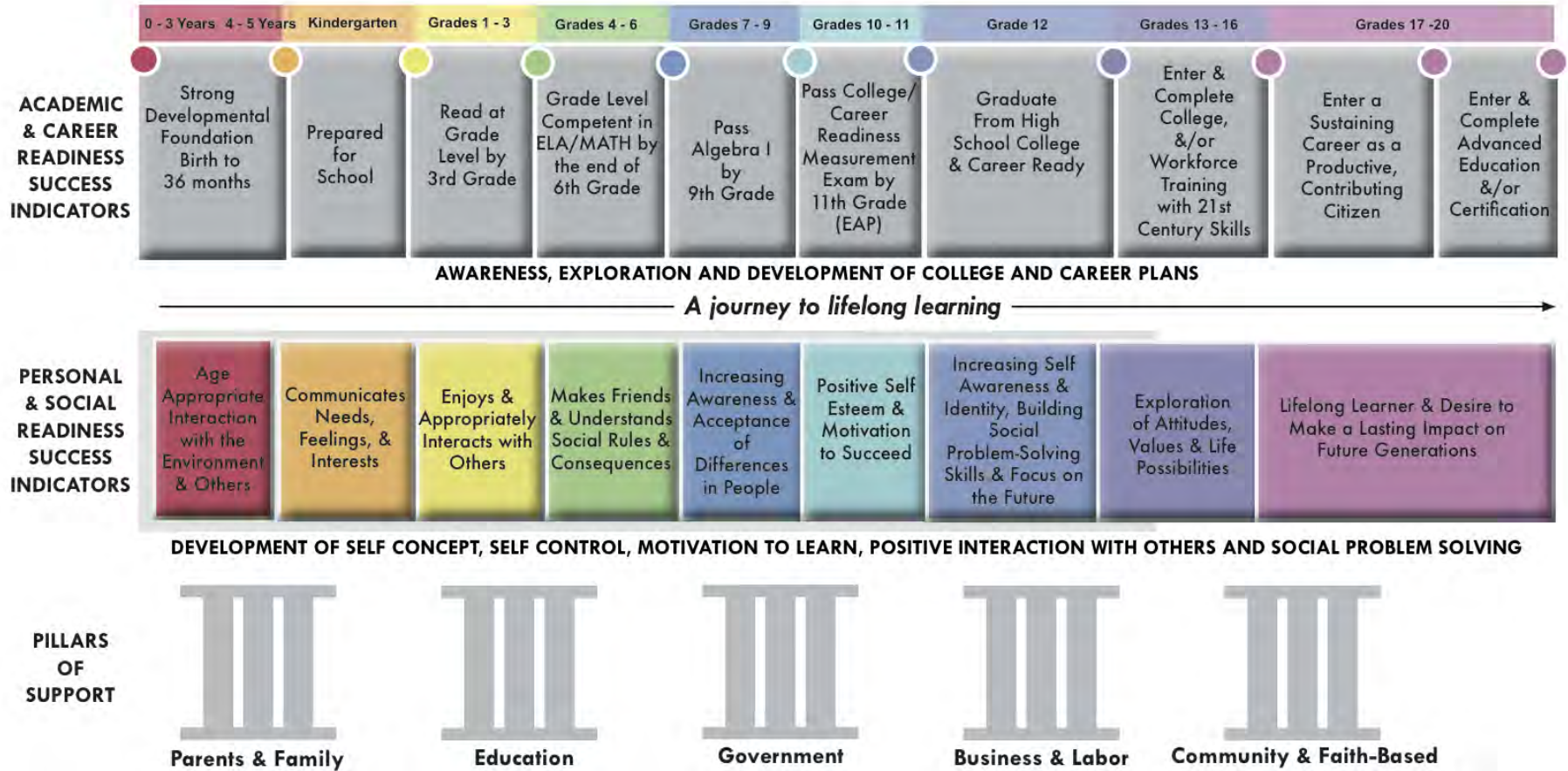


Gary S. Thomas, Ed.D., Superintendent



San Bernardino County Community Cradle to Career Roadmap

Where every student has the “mindset and disposition” for college and career readiness*



A Collective Impact Approach to Achieve Our Countywide Vision

*College and career readiness refers to the content knowledge, skills, and habits that students must possess to be successful in postsecondary education or training that leads to a sustaining career. A student who is ready for college and career can qualify for and succeed in entry-level, credit-bearing college courses without the need for remedial or developmental coursework.



Mission

To produce an educated and skilled community
that provides a qualified workforce
for the continued economic well-being
and improved quality of life
for all residents of
San Bernardino County



Goals



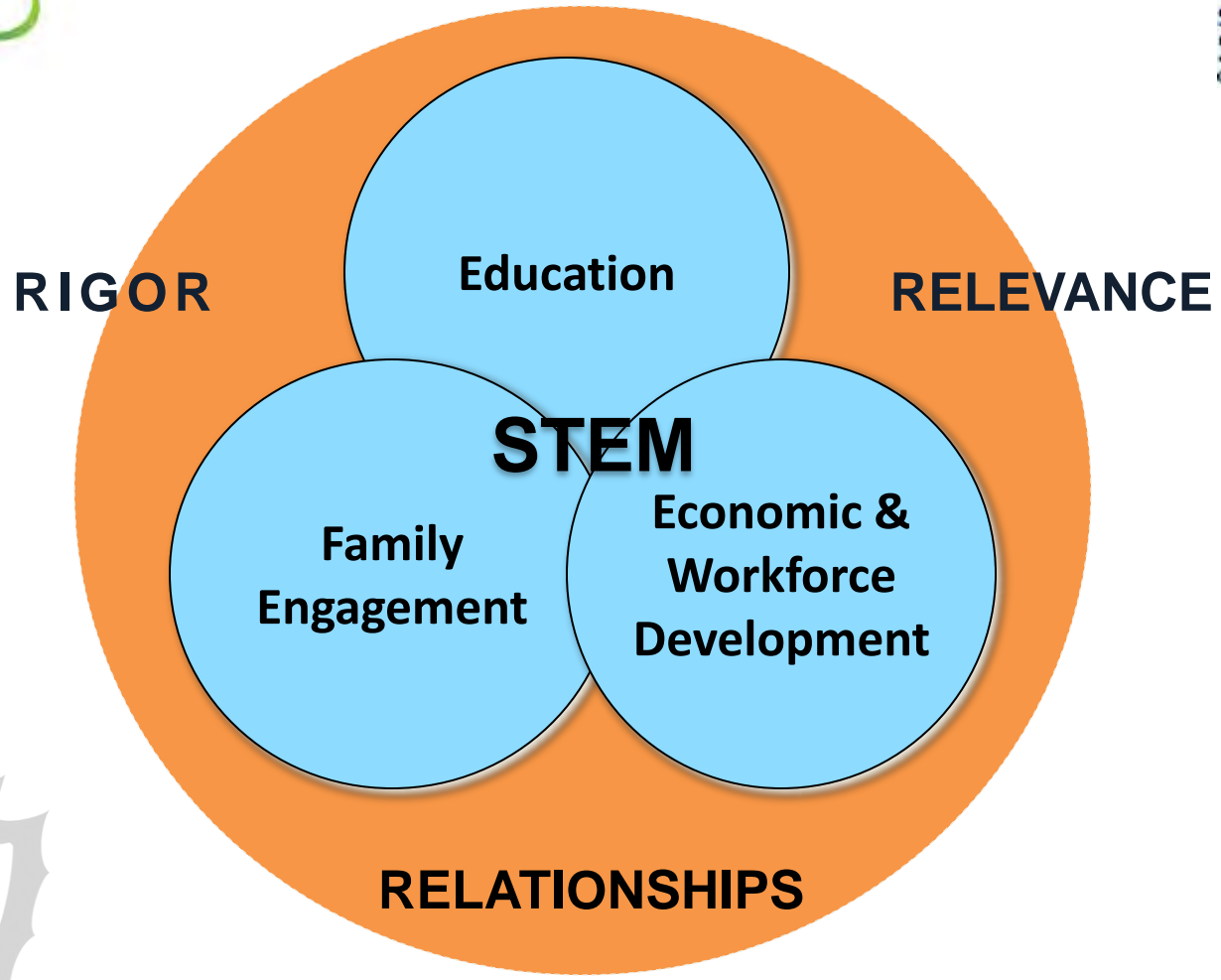
Education: To strengthen a standards-based, academically rigorous curriculum through relevant, hands-on learning opportunities provided by business, labor, and community partnerships.

Family Engagement: To provide family education, parent involvement activities, and literacy programs and resources through education institutions, businesses, and community/faith-based organizations.

Economic and Workforce Development: To utilize current systems of workforce preparation in order to effectively align common goals and resources and deliver services, education and/or training to students and adults countywide.

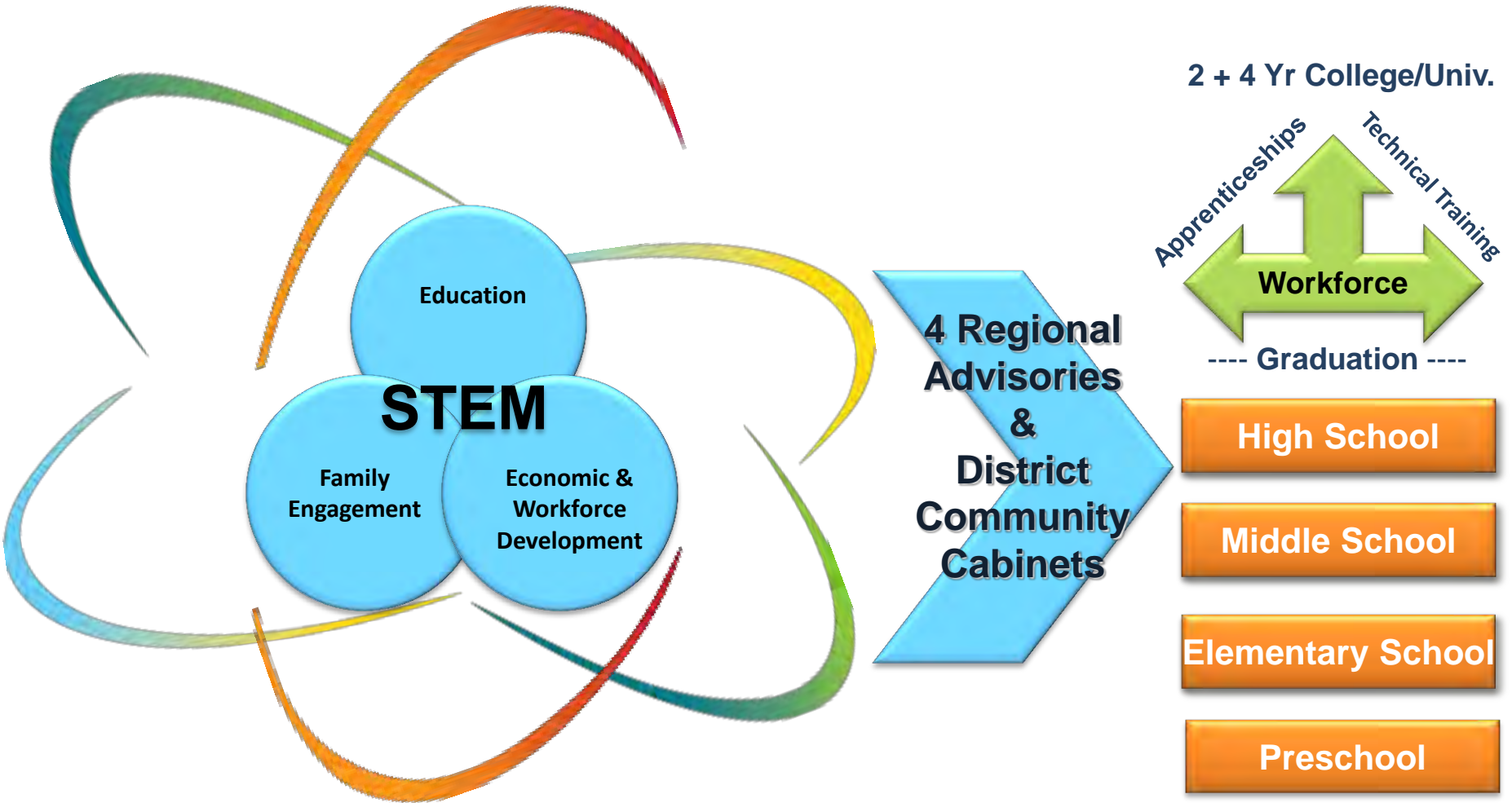


Interdependent System



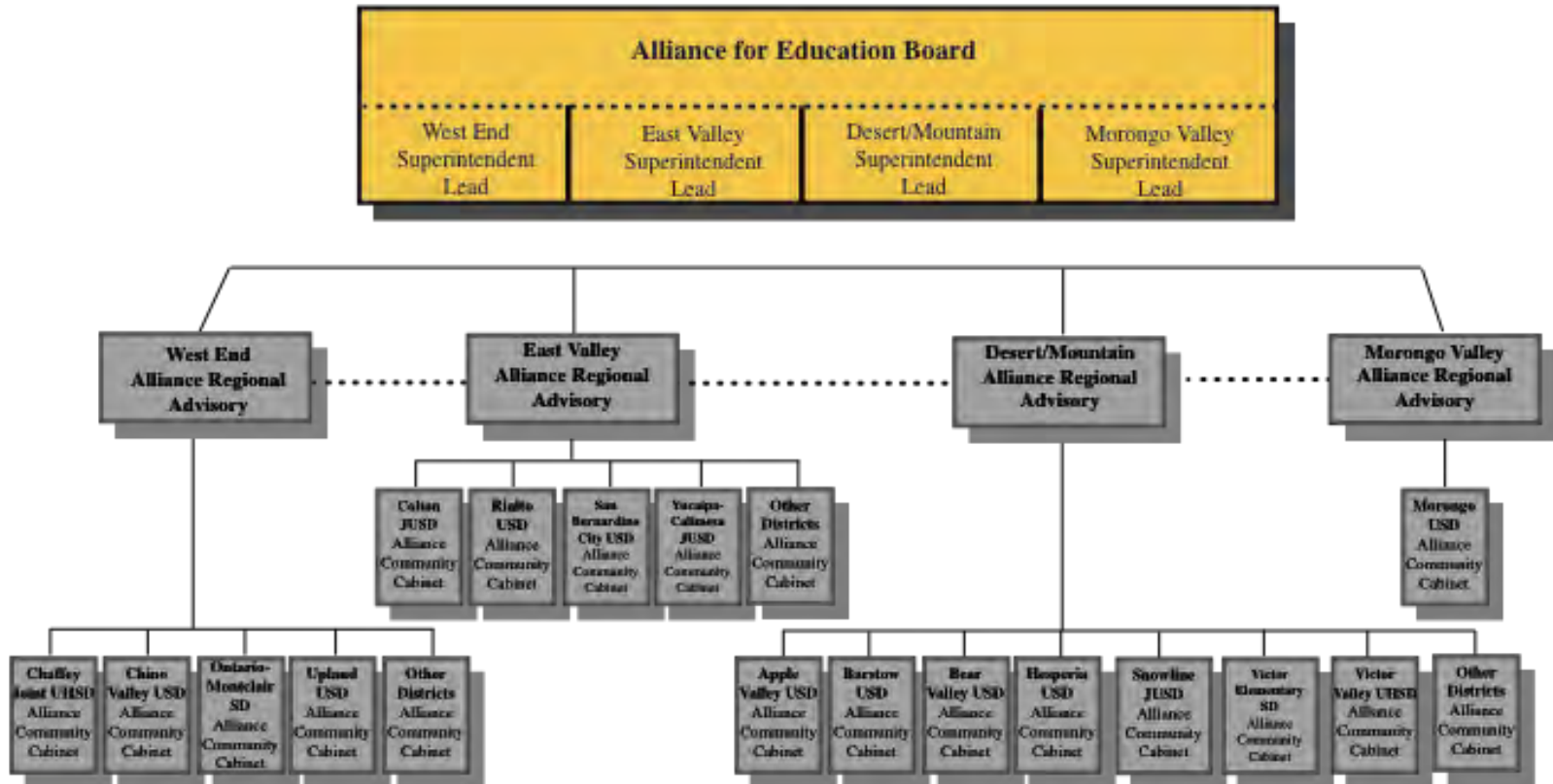
STEM = Science, Technology, Engineering and Mathematics

Building a STEM Culture In San Bernardino County



STEM = Science, Technology, Engineering and Mathematics

Alliance for Education Regional Reorganization Structure



Alliance for Education Leadership

Roles & Relationships

All:

- Guide Vision and strategic process
- Support the action plan aligned to the Countywide Vision
- Build public will and capacity for a “Collective Impact” work

Alliance for Education Board

(Convenes 3 x Year)

- Serves in an advisory capacity to provide support to the Regional Advisories
- Advises on the shared measurement system and practices
- Mobilizes annual fund raising campaign
- Reports measured progress and analysis to San Bernardino County for annual report

4 Alliance Regional

Advisories

(Convene 4 x Year)

- Provide direction to and support of the region’s work to accomplish the Cradle to Career Roadmap
- Oversee regional shared measurement system
- Accomplish regional fundraising
- Report quarterly measured progress and analysis to the Alliance for Education Board

Alliance District Community Cabinet

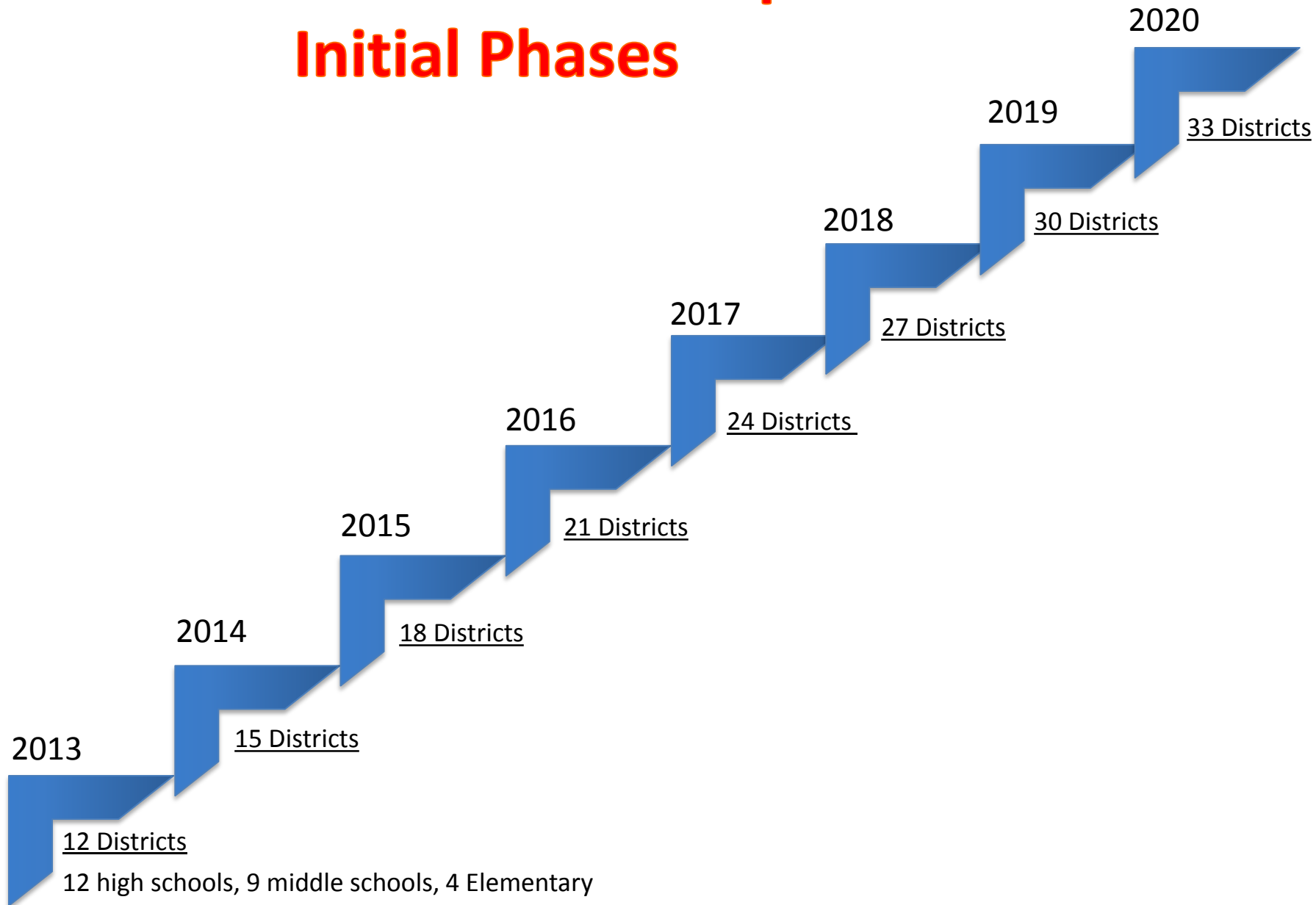
(Convenes Regularly)

- Provides direction to and support of the community collaborative to accomplish the Cradle to Career Roadmap
- Collects and analyzes data for shared measurement system and continuous improvement
- Provides quarterly measured progress and analysis to the Regional Advisory Board
- Leverages resources and develops collaborative partnerships

Participating Stakeholders Community Collaborative

- Work collaboratively to accomplish the Cradle to Career Roadmap
- Collect data for shared measurement system and continuous improvement
- Provide quarterly data updates to the District’s Community Cabinet

Timeline for Collective Impact Initial Phases

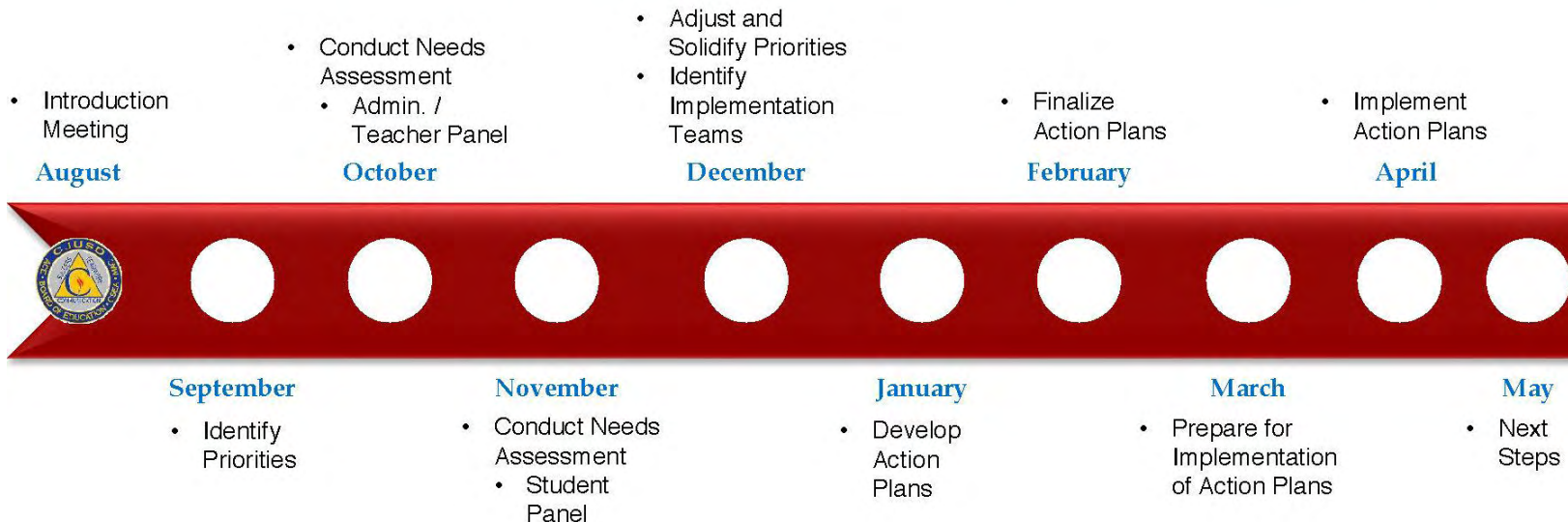


Colton Joint Unified School District



A Purposeful Community

Community Cabinet Timeline



2013-2014



***FOR MORE INFORMATION CONTACT
THE ALLIANCE FOR EDUCATION
AT
SBCALLIANCE.ORG
OR CALL
LESLIE RODDEN, (909)777-0850***